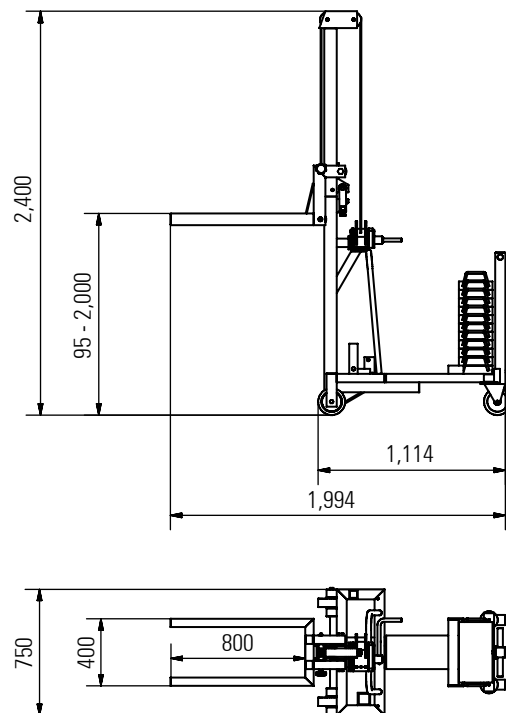
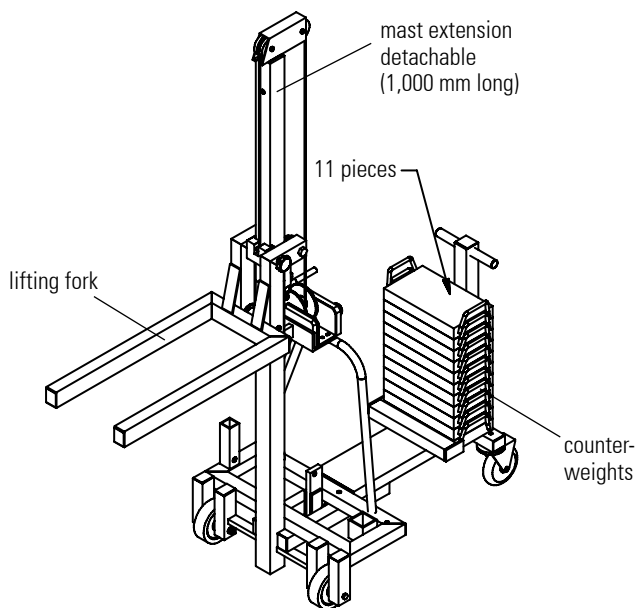
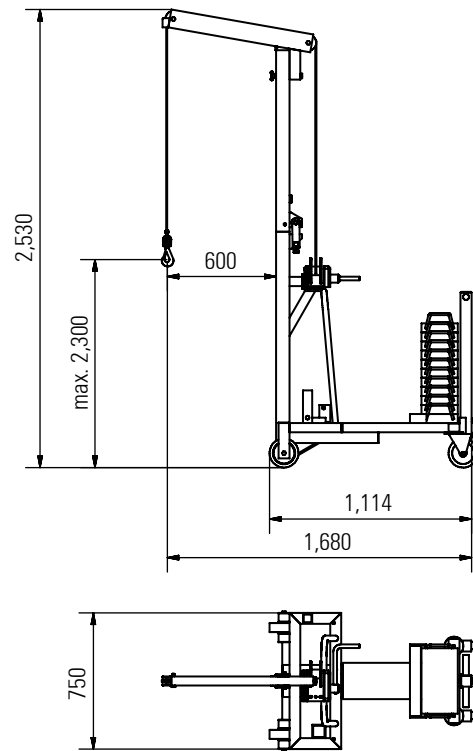
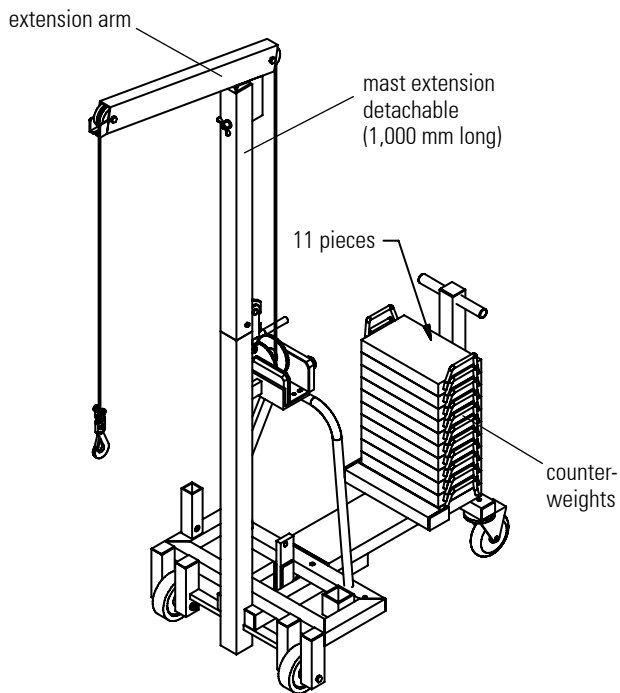




Aluminium Multilift with counterweight

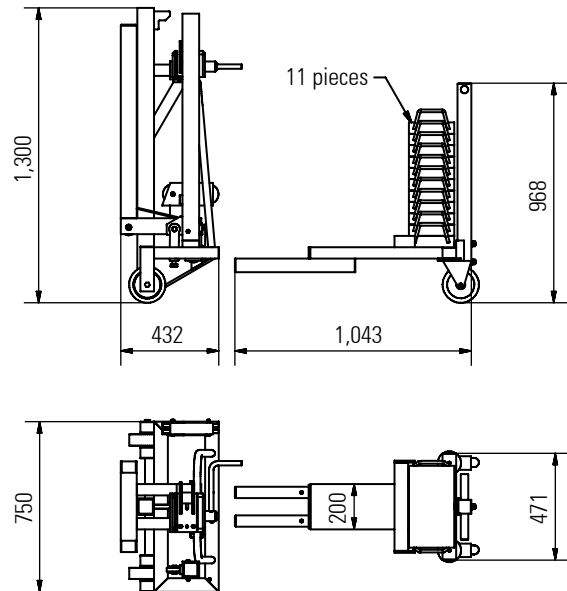
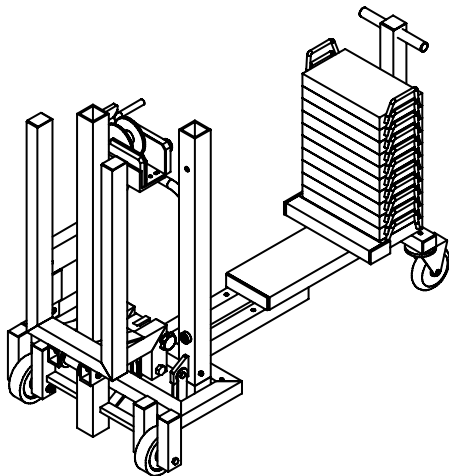
Item No. 6120250





Item No. 6120250

Aluminium Multilift with counterweight



Technical Data

load capacity 250 kg
own weight 400 kg

with cable winch
incl. anti-turn secured cable rope
diameter 5 mm
cable length 5,100 mm
travel per rotation 50 mm
one end pointed, one end with thimble

with 2 pieces heavy-duty tyres
with super-elastic-solid rubber
tyres
diameter 160 mm
These tyres are mounted to the base
frame.

with 2 pieces heavy-duty tyres
steel swivel casters
with integrated wheel and live
ring brake
with super-elastic-solid rubber
tyres
diameter 160 mm
These tyres are mounted to the add-on
part.

extension mast is detachable
(1,000 mm)

Version with extension arm:
reach 600 mm
travel of hook 2,300 mm
with safety snap hooks made of stain-
less steel (whirl hook)
rotates through 360° under load

Version with lifting fork:
lifting height 95 - 2,000 mm
fork width 400 mm
fork length 800 mm

Description

- Delivery contents:
including extension arm
including lifting fork
- The Aluminium Multilift has been
especially developed for companies
that are in need of a mobile lifting
device.
- The lifting operation is performed by a
cable winch.
- The lift's mast can be divided.
- The counterweights are provided with
a safety device to prevent inadvertent
removal.
- The Aluminium Multilift can be folded
completely with a minimum of effort
and space saving stored.
- It is possible to remove the add-on
part (incl. 11 counterweights) from the
Aluminium Multilift with four screw
connections.