

SCHILLING aluminium gantry crane in use



INSTALLATION TECHNOLOGY

Maintenance work

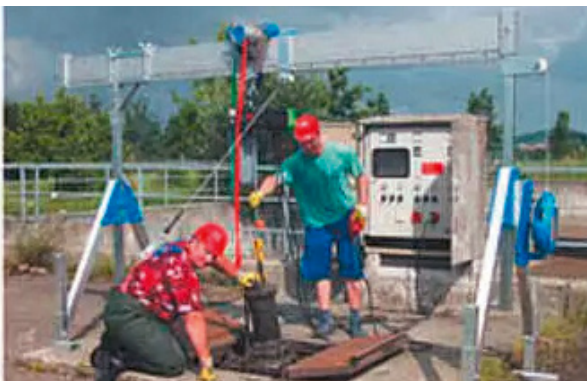


INITIAL SITUATION ▲ Regular maintenance of equipment and technical systems is routine in many production and service companies. However, the conditions for this are not always easily and effortlessly accessible. In a wastewater treatment plant, we were tasked with a specific lifting operation for regular pump maintenance, requiring secure support for employees.

SOLUTION ▲ We provided a solution that reliably covers both tasks. It is a major advantage! All SCHILLING gantry cranes are tested and approved for lifting and lowering loads as well as for securing people. Another task was the precise handling of heavy loads. Thanks to the easy-to-operate trolley, the components to be replaced during pump assembly, can be positioned and assembled precisely and accurately, despite the sometimes very heavy weight of the parts.

RESULT ▲ In this particular case, the maintenance work is spread across the entire site of the sewage treatment plant. The SCHILLING gantry crane is easy to dismantle and, due to its small dimensions, is easy to transport when dismantled. For this customer, a standard device with a load capacity of 1,000 kg proved ideal for all tasks, the SCHILLING gantry crane is therefore with its well-thought-out system the perfect choice!

Homepage, 06.04.2020: [Gantry crane in use for maintenance work](#)



SCHILLING Kran- und Hebeteknik GmbH
Ernst-Zimmermann-Straße 9-11 · 88045 Friedrichshafen · Germany · Tel. +49 7541 60404-0 · mail@schilling-fn.de

