

we **LiFT** IT.

Magazine for partners & customers
• Anniversary year •



It has now been 25 years since Martin Schilling, the name-sake and owner of **SCHILLING Kran- und Hebetchnik**, gave the starting signal. Today we are a medium-sized company with close ties to our home region, independent, manageable, clearly structured and, above all, close to our customers. We are active on the market with our own development and production, are established and operate worldwide. This makes us happy and, admittedly, „a little“ proud. Our location in Friedrichshafen on Lake Constance is no coincidence: on the one hand, we are at home here, and on the other, the city is considered the cradle of lightweight construction. The production of the first Zeppelin LZ1 in 1900 paved the way for pioneering technologies. Our aim is to move heavy loads as simply as possible. The basic principle of our products is as simple as it is ingenious - mainly made of aluminium and plastic. They can be assembled in a few simple steps, stored in a space-saving manner and

transported conveniently to the place of use. In the icy Arctic, at historical excavation sites, at lofty heights on construction sites of industrial buildings and much more. All **SCHILLING** aluminium gantry cranes are tested and approved for transporting materials and securing people. The product range includes standard items as well as customized special solutions. Our gantry cranes, tripods, multi-lifts, slewing cranes and various lifting beams make daily work easier for the user. Our own products are mainly used in trade and commerce and increasingly in industry. The entire **SCHILLING team** fulfills the wishes of our partners and customers quickly, reliably and without complications on a daily basis and with a high level of personal commitment.

THANK YOU for 25 years!



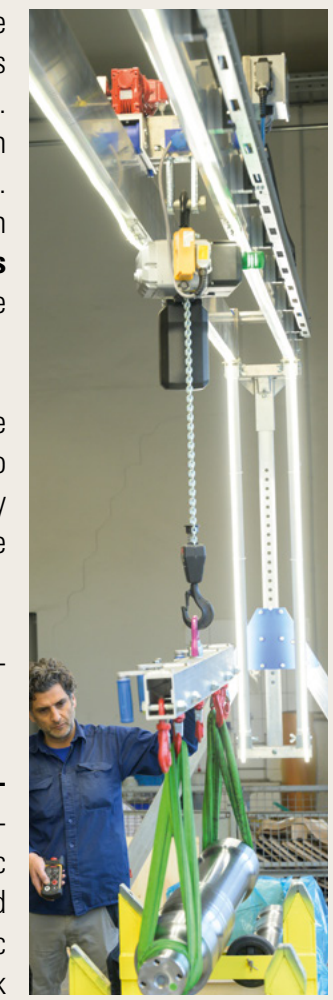
Electrically movable trolley - THE PLUS in handling

With its lightweight design and mobility, the **SCHILLING aluminium gantry crane** enables flexible use in a wide variety of environments. The lightweight but sturdy aluminium construction makes the crane easy to transport and set up. The **aluminium gantry crane** is ideal for use in **workshops, warehouses, construction sites** and in **industry** where heavy loads need to be lifted and moved.

In many applications, it is sufficient to move the trolley by hand when handling loads. This is also possible with heavy loads, as the trolley is very smooth-running. If more comfort is required, we now have a practical and convenient solution.

It couldn't be simpler, our new electrically operated trolley makes it possible.

The **electrically movable trolley of the aluminium gantry crane** ensures smooth and convenient movement of loads. Thanks to the electric drive, heavy and bulky goods can be lifted and moved relatively effortlessly. The use of electric motors instead of manual drives makes work



easier and requires less physical effort from the user. No personal effort is required when working with the aluminium gantry crane with electrically movable trolley.

Another advantage is their **precision**. The load can be moved gently and precisely and positioned exactly. This is particularly important when it comes to sensitive or expensive materials that need to be handled with care.



The **SCHILLING aluminium gantry crane with electrically movable trolley** is therefore an ideal solution for companies that require reliable and efficient material handling. The combination of lightweight construction, mobility and precision makes it a versatile and powerful piece of factory equipment.

The electrically movable trolley in action!



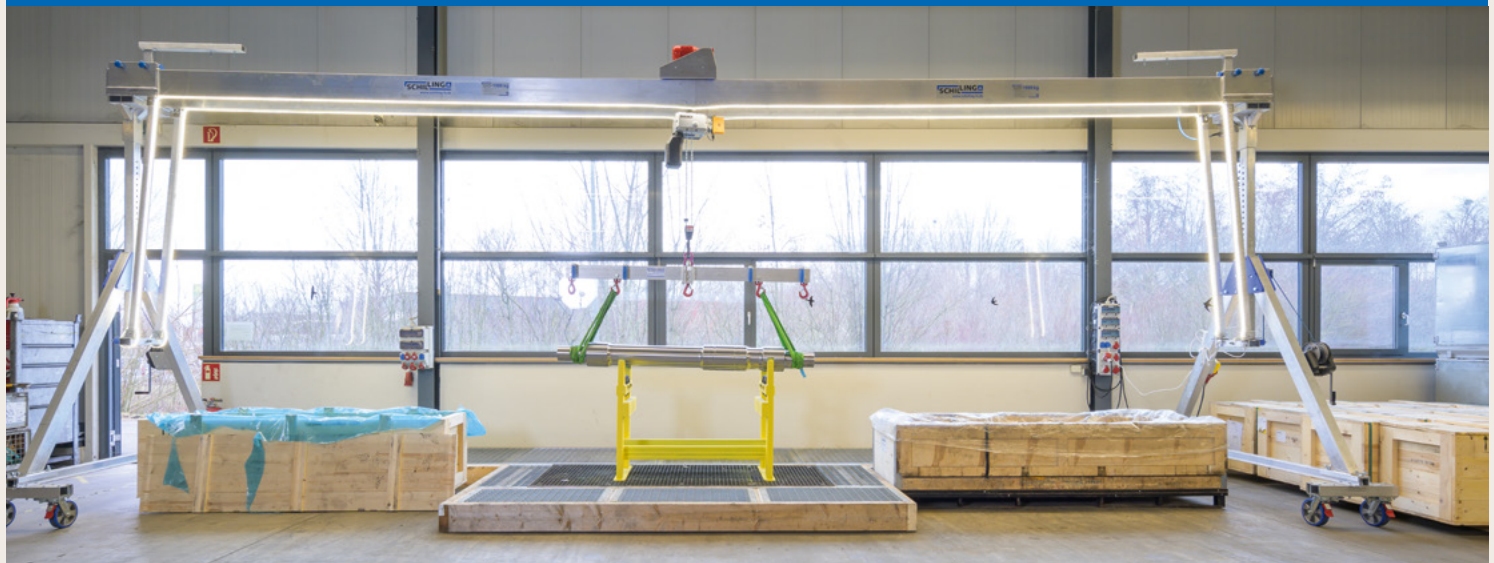
To see the video click here ...

The electrically movable trolley makes the alu gantry crane even more flexible:

-  for vertical movement of the load: lifting ↑ lowering ↓
-  to move the load horizontally on the aluminium beam ↔

The electrically movable trolley is available for all standard cranes:

	stationary version	single beam	load capacity	500 kg 1,000 kg 1,500 kg
	stationary version	double beam	load capacity	500 kg 1,000 kg 1,500 kg 2,000 kg 3,000 kg
	mobile under load	single beam	load capacity	500 kg 1,000 kg 1,500 kg
	mobile under load	double beam	load capacity	500 kg 1,000 kg 1,500 kg 2,000 kg 3,000 kg
	new crane version high - higher - even higher			



03/2024

High - higher - even higher!



SCHILLING
alu gantry crane -
the ideal solution
for demanding
tasks and projects

Our new **mobile aluminium gantry crane** with impressive height in the mobile under load version exceeds the maximum heights of the previous standard crane systems from **SCHILLING** and sets new standards:

Suspension point at the bolt of the trolley
 max. approx. 5.50 meters

Beam length
 8 m with load capacity 1,000 kg | 1,500 kg | 2,000 kg
 6 m with load capacity 3,000 kg

The proven technology and our demand for the highest product quality make this crane the ideal solution for demanding tasks and projects.

This **SCHILLING aluminium gantry crane** is not only remarkably high, but also extremely versatile. **With a maximum load capacity of 3,000 kg**, it is ideal for demanding lifting tasks. Whether heavy components, machines, or materials - this crane moves them almost effortlessly. Whether assembly, maintenance or other challenges - the **SCHILLING aluminium gantry crane** is ready to tackle your projects.

This **movable aluminium gantry crane** is equipped with wheels with brakes and 4 x 90° directional locks as standard. With this wheel combination the gantry crane can be moved exactly lengthways or laterally. By releasing the fixed direction wheels, the crane can be moved freely. With the use of the brake system the alu crane can be secured positioned.

Thanks to its flexible assembly, this product can be used in a wide variety of locations. The manual winches on the **„even higher“ gantry crane** allow the height of the unloaded crane to be adjusted easily and stepless.

Whether on the **construction site**, in the **workshop** or in the **industrial hall** - the aluminium gantry crane adapts to the conditions and enables efficient work. Assembly is also relatively straightforward, so that it is quickly ready for use.

Place your trust in the quality and reliability of our new gantry crane. Available at short notice!



+++ NEW IN THE PROGRAM +++ Suspension point max. approx. 5.50 m +++

03/2024

ALL standard SCHILLING aluminum gantry cranes are tested for material handling and personal safety are tested and approved



Securing persons against falling – the SCHILLING aluminum gantry crane as an anchorage device according to EN 795:2012

The sophisticated systems of SCHILLING aluminum gantry cranes can also be used for alternative purposes. In addition to the traditional lifting of loads, the securing of persons is now also certified and therefore permitted.

The SCHILLING aluminum gantry crane has been type-tested in conjunction with the trolley as an anchorage device. The person to be secured can secure themselves directly to the trolley using "personal protective equipment" of their choice. Any rescuer can then also secure themselves to the same trolley.

A maximum of one user per trolley can secure themselves against falling with their "personal protective equipment". The trolley itself is secured by activating the red strap.

In general, our aluminum gantry crane systems are characterized by their high flexibility and easy handling. The height- and length-adjustable, free-standing construction can be easily assembled and dismantled in a few simple steps. No structural modifications (e.g. dowel fixings or similar) are necessary.

Lifting loads, securing people – tested and approved

Load capacity aluminum gantry crane

Depending on the load capacity of the gantry crane, up to 5 trolleys can be used, so that up to 5 people can be secured at the same time.

The trolley used to secure persons must not be used to carry a load at the same time, no load may be picked up in parallel.

If a trolley is used to carry a load, another trolley may be used in parallel to secure persons. This reduces the nominal load of the crane by 600 kg.

If several trolleys are used to secure persons, the nominal load is reduced by a further 100 kg for each additional person to be secured.

Permissible number of persons

- 500 kg
- 1,000 kg
- 1,500 kg
- 2,000 kg
- 3,000 kg

Example

Crane rated load	2,000 kg
Trolley for personal safety device	- 600 kg
Additional trolley for personal safety device:	- 100 kg
Remaining load capacity	1,300 kg

When working in areas where there is a risk of falling „personal protective equipment“ against falls from a height must be used. See also DGVV Rule 112-198.

Anchor devices according to DIN EN 795 are components in fall arrest, restraint, or work positioning systems.

The gantry crane is approved for securing persons, but not for transporting persons. It must therefore not be used for lowering persons. The requirements for anchorage devices that can be removed from the structure as part of the fastening system are regulated in DIN EN 795, among others.

The anchorage device itself is defined in the PPE.

PPE against falls from a height is classified in risk category III (protection against risks that could lead to very serious consequences such as death or irreversible damage to health). The conformity assessment procedure for PPE against falls from a height includes an EU type examination.

Type examination of anchorage system
SCHILLING aluminum gantry cranes are type-approved for use as a type B anchorage device for securing persons in accordance with DIN EN 795:2012.

+++ NEWS TICKER +++ NEWS TICKER +++ NEWS TICKER +++
... Products in use ... What moves us ... Interesting insights ...

Aluminium packaging and transport box - back in our range

The compact SCHILLING packaging and transport box with a length of 2.40 metres is now available again in our range.



... read more

Horizontal alignment - flexible and possible at any time with SCHILLING

Employees in factories, production facilities or workshops are confronted with challenging lifting tasks every day ...



... read more

Aluminium gantry crane with pulley block for easy lifting of heavy loads - we can deliver at short notice

We have a large number of high-quality aluminium pulley blocks in stock so that we can deliver ...



... read more

SCHILLING drives with Max Müller

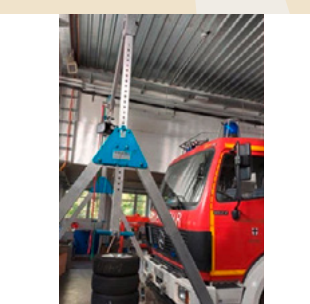
We are very pleased to now also be present as an advertising partner on the vehicles of the Max Müller ...



... read more

SCHILLING gantry crane in use by the fire brigade

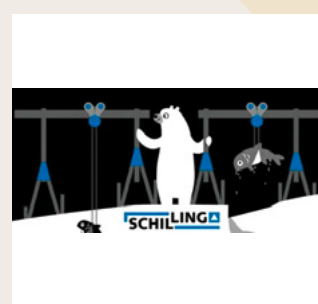
Our SCHILLING crane and lifting products are also used by many fire brigades. At the fire brigade in Konstanz, for example, ...



... read more

In the cold season - Bruno the polar bear

On a beautiful sunny day, Bruno looked out at the dark, cold sea as he often did. He realized that many fish were swimming past his iceberg. ...



... read more

Lifting technology from SCHILLING helps with the annual maintenance work of the White Fleet

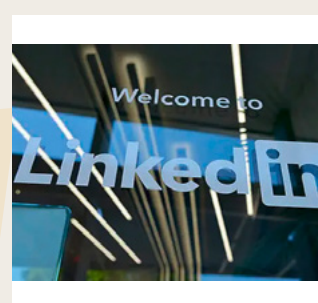
In the winter months, when the ships of the White Fleet are no longer on the lake, the shipyard staff ...



... read more

Expanding customer and supplier contacts via social media channels

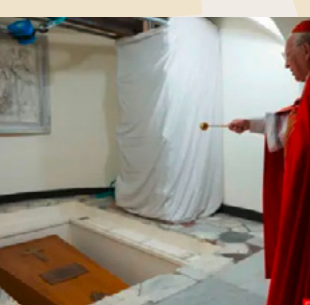
In today's digitalised world, social media platforms are becoming increasingly important. They enable us to get in touch with our customers, ...



... read more

Funeral of Pope Benedict XVI under St. Peter's Basilica

In April 2005, Joseph Ratzinger was elected the 265th pope and took the name Benedict XVI. During his tenure, he advocated a return to fundamental Christian values ...



... read more

The right workshop crane for your work

Heavy lifting work in workshops is increasingly being replaced by modern crane and lifting technology. The right workshop crane makes work in workshops much easier. ...



... read more

What happened 25 years ago? ... a small excerpt

1999

The government and parliament move from Bonn to Berlin.

Bayern Munich lost the CL against Manchester United in the last seconds.

The euro is introduced as the official currency.

RTL broadcasts the first show of „Who wants to be a millionaire“.

Günther Grass receives the Nobel Prize for Literature.

There is a total solar eclipse in large parts of Europe.

SCHILLING „in a glimpse“

- more than 1,500 Tripods
- more than 25,000 Gantry Cranes
- more than 500 Slewing Cranes
- more than 1,000 Multilifts
- more than 3,000 Various Lifting Beams
- more than 4,000 Custom-made Products



SCHILLING Kran- und Hebetchnik GmbH

Ernst-Zimmermann-Straße 9-11 · 88045 Friedrichshafen · Germany · Tel. +49 7541 60404-0 · mail@schilling-fn.de



ALL AT A GLANCE: www.schilling-fn.de/en/news